

Preparacion



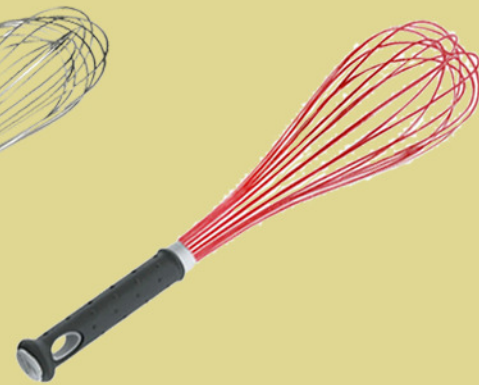
batidor 35, 40, 45 c.



batidor 25, 30, 35, 40,45 c.



batidor super 30, 35 c.



batidor silicona 35 c.



pincel 4, 6. 7,5 c.



pincel 4,5 c.



pincel silicona



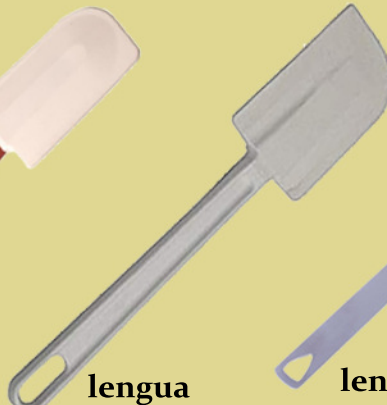
cribador 350 grs.



lengua 31 c.



L. altas
temperat. 35 c.



lengua
rigida 24, 35 c.



lengua
flexible 23 , 31 c.



cedazo 4 mallas



espatula acodada



espatula lisa 25, 30 c.



cabezal
soplete



soplete
profesional



quemador elect.
650W 10 cm.

Preparacion



R. perforar pasta



rodillo poliet. 500xd.50 c.
rodillo poliet. 600xd.60 c.



rodillo madera 50 c.



rasqueta poliet. 12x9 c.
rasqueta poliet. 15x10 c.



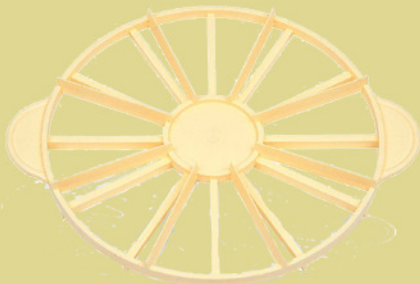
rasqueta inox flexible
rasqueta inox 15x11 c.



rodillo cortador croissant, croissant mini



cortapastas extensible 6 ruedas



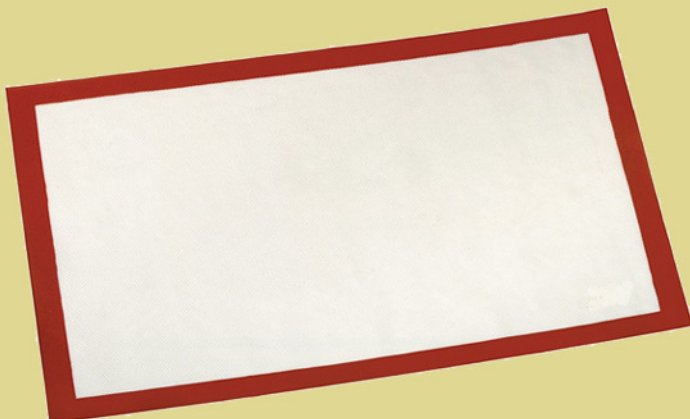
marcador porc. 8/12, 14/16



aros emplatat



cortapastas liso 9 uds.



tapete silicona 60x40 c.



marco rect. 40x30x5 c.
bandeja para marco

Varios



boquillas
relleno



boquilla
redonda



boquilla
estrella



boquilla
flor



boquilla
rizada



boquilla
cinta estrella



caja 12 boquillas polip.



manga nylon 40 c.
manga nylon 50 c.



mangas deshab. 55 c.



secador mangas/boquillas



sifon inox 1L. frio/caliente



sifon alum 1L, 0,5L.



cargas caja 24 u.



Rac. 56 mm./16b.
Rac. 59 mm./13b.
Rac. 66 mm./10b.



racionador mec. pulgar



cuchara helado inox

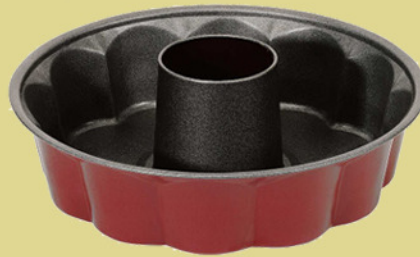


bandeja expositora 28x19 c.
bandeja expositora 35x24 c.
bandeja expositora 42x30 c.

Moldes



molde desm alto 20, 24 c.



molde fiorela 28x7 c.



bandeja rect. 41x31 c.



molde desm. cuadrado 28 c.



molde desm. inox 26, 28 c.



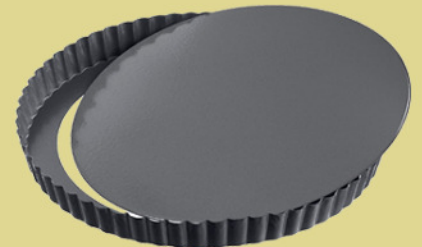
molde desm. 28, 30 c.



molde antiad. 32 c.



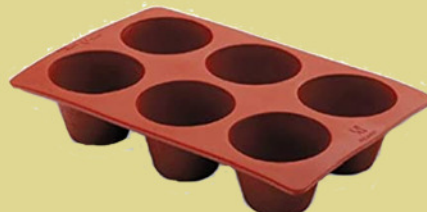
molde Patisserie 26 , 28 c.



molde Patisserie f. movil 28 , 32 c.



flanero 7 , 8, 9 c.cm.



molde flan 7 c. 6 cav.



Molde briochette 6 cav.



molde mini muffin 12 cav.



Molde muffin 6 cav.



molde semiesferica 6 cav.



M. silicona cake 24 c.



M. silicona rizado 29 c.



molde silicona 28x24 c.



molde silicona 24, 26, 28 c.